

The Kiwi Compass

Experience iconic attractions and hidden gems in this 30 day tour discovering the North and South Islands in great detail. Explore the Bay of Islands, Rotorua, Kaikoura, Dunedin, Te Anau and Milford Sound, Queenstown and the West Coast Glaciers as well as the major cities. You'll also spend time in more off the beaten track locations such as the Coromandel, Hawke's Bay, Wairarapa and Abel Tasman National Park. Experience the diverse geography between the north and south, the spectacular landscapes and the rich wildlife that inhabits our land and seas.

Starts in: Auckland
Finishes in: Christchurch
Length: 30days / 29nights
Accommodation: Motels
Can be customised: Yes

This itinerary can be customised to suit you perfectly. We can add more days, remove days, change accommodations, mix it up, add activities to suit your interests or simply design and create something from scratch. Call us today to get your custom New Zealand itinerary underway.



Inclusions:

Includes: Late model rental cars
Includes: Fully inclusive rental car insurance (excess may apply)
Includes: Unlimited kms
Includes: Afterhours emergency support while touring
Included activity: Private Transfer Auckland Airport to your Auckland Accommodation with Tourcorp
Included activity: Electronic Travel Guide and In-Country Support App
Included activity: Interislander Ferry Wellington to Picton
Included activity: Milford Sound Cruise with Real NZ - Lunch Included
Included activity: TranzAlpine Scenic Train: Greymouth to Christchurch
Included activity: Shared Transfer from Christchurch Train Station to Christchurch CBD Accommodation with Christchurch Touring Company
Included activity: Private Transfer from Christchurch Accommodation to Christchurch Airport with Christchurch Touring Company
1 lunch

Day 1



Private Transfer Auckland Airport to your Auckland Accommodation with Tourcorp

You will be met at the Auckland airport by the driver and transferred to your Auckland accommodation.

Welcome to Auckland

Kia ora! Welcome to Auckland, known in Māori as Tāmaki Makaurau. Auckland is New Zealand's vibrant "City of Sails," and the country's largest metropolitan area. Nestled between the Pacific Ocean and the Tasman Sea, it offers something for everyone. Surrounded by native bush, lush rainforests, and pristine beaches, Auckland is a haven for both adventurers and urban explorers. Wander through world-class museums and galleries in the city centre or enjoy a peaceful retreat at the Auckland Gardens, where stunning landscapes showcase New Zealand's diverse flora. Stroll along the lively waterfront to savour fresh seafood and international cuisine at the Viaduct restaurants. For an unforgettable perspective, ascend the iconic SkyTower, New Zealand's tallest structure, and take in panoramic views of the city and its picturesque islands.

Your accommodation: Nesuto Stadium Hotel and Apartments

Nesuto Stadium offers a comfortable self-contained apartment in downtown Auckland. Located a short walk from Britomart Transport and the Viaduct. Enjoy your stay in central Auckland surrounded by delicious eateries or use your in-house kitchenette to dine in!



Day 2



Collect Rental Car

Choose a car to best suit your needs from our fantastic rental car range. From compact economy, hatchbacks to prestige SUVs.

Car Instructions

On collection of your rental car, you will be required to sign a rental agreement and provide a credit card for a security bond authorisation. Remember, the bond is only authorised, not charged, at this stage. While your rental rate may include coverage for mechanical breakdowns (please verify your specific car inclusions), you may also have the option to purchase roadside assistance for non-mechanical issues. All drivers must present a physical credit card, valid driving license and passport to be added to the agreement, with potential additional charges for extra drivers. Debit cards may be used on select vehicles. If you are presenting an international drivers license, this must be accompanied by the original domestic license. Drivers under 21 are not permitted, and those aged 21-24 may face a surcharge, both payable directly to the rental company. For detailed information, please refer to your rental car inclusions. See this important information if you are traveling between the North and South Islands on the ferry

Explore Auckland

Perched on the edge of a large natural harbour, New Zealand's "City of Sails" offers the best of both worlds. Sandy beaches, native bush and lush rainforests give way to a vibrant urban culture, humming with life. Spend time in the Viaduct Harbour, try your hand at sailing an America's Cup yacht or take the ferry to nearby Waiheke Island for a gourmet food and wine experience. If you're looking for a lovely walk, venture to the top of Auckland's highest volcano, Mt Eden, and take in soaring views of the gulf or hop on the short ferry to Rangitoto Island and hike to the top of the volcanic island. Immerse yourself in nature's beauty at the expansive Auckland Botanical Garden's, sprawled across 156 acres of lush land and native forest on Hill Road. Pack a picnic, soak up the sunshine, and delight in the melodious birdsong during a peaceful lunch. Head up to the Sky Tower, standing at just over 300m tall (about 1,000 feet) and have a meal in the 360-degree revolving restaurant. Scale the outermost perimeter of the Harbour Bridge or test your stomach and bungee off both. To end your day, catch a cab to Ponsonby Road and sample some upmarket culinary delights.

SUGGESTED ACTIVITY - Harbour Sailing Cruise with Explore

Enjoy the City of Sails from the water on a relaxed harbour sailing yacht. This cruise offers a uniquely local experience experiencing the harbour under sail with a small vessel with an intimate and engaging atmosphere. View the stunning city sights while sailing on the inner Waitemata Harbour. Sail where the wind takes us while enjoying Auckland's city highlights; including sailing under the Harbour Bridge and other well-known landmarks along the harbour's edge. The crew's local knowledge will give you the best harbour sailing experience Auckland has to offer. Become the crew and help participate with the sailing experience take the helm while you carve through the water, or if you prefer just sit back and relax above deck.

Your accommodation: Nesuto Stadium Hotel and Apartments

Nesuto Stadium offers a comfortable self-contained apartment in downtown Auckland. Located a short walk from Britomart Transport and the Viaduct. Enjoy your stay in central Auckland surrounded by delicious eateries or use your in-house kitchenette to dine in!



Day 3



Auckland to Paihia

The drive from Auckland to the Bay of Islands takes approximately 3.5 hours, but allow extra time to enjoy the sights along the way. Pause for a breath of fresh salty air in Whangarei, where you can explore scenic highlights like the Whangarei Falls or the lively Town Basin. Further along, take a break in Kawakawa known for its quirky, world-famous Hundertwasser Toilets. As you approach Paihia, the gateway to the Bay of Islands, soak in the stunning views of native bush and endless golden beaches that define this iconic Northland region.

Your accommodation: Sea Spray Suites

Sea Spray Suites offers comfortable and relaxing accommodation close to Paihia's best activities and attractions. Directly across the road is the beautiful Te Ti Beach, exploring Paihia's beautiful waters and wildlife is only a short step away. If you are interested in experiencing New Zealand's heritage, The Waitangi Treaty House is only 1km away.



Day 4



Explore Bay of Islands

Commonly known as the 'winterless north', New Zealand's Bay of Islands is made up of over 140 subtropical atolls. Renowned for its untouched beaches, abundant marine life, and idyllic climate, this tropical paradise ticks all the boxes. Spend some time on a remote stretch of beach, or see the dolphins on an ocean safari. If diving is your thing, take the morning to descend the Rainbow Warrior - The Greenpeace flagship sunk by French saboteurs in 1985. Wander around Russell, a whaling port founded in 1843. Learn about our culture in historic Waitangi, the site where The Treaty of Waitangi was signed in 1840 between the Māori and Europeans. Alternatively, you may like to take a day tour to Cape Reinga, the very top of the North Island.

SUGGESTED ACTIVITY - Hole in the Rock Cruise with Fullers GreatSights

Board your cruise and take in the stunning views as you glide out through the islands and along the Rakaumangamanga Peninsula to Cape Brett, where a historic lighthouse keeps watch over and Piercy Island/Motukōkako, or as it is popularly known as the Hole in the Rock. According to Māori legend, local warriors used to paddle through the Hole in the Rock in their canoes before departing for battle. Drops of water from the cave roof above were a good omen. If conditions permit, your skipper will expertly guide the ship through the narrow space. Keep an eye out for common and bottlenose dolphins, whales, and other marine life during your cruise, and have your camera ready as you get up close to the action. Stop off at Otehei Bay on Urupukapuka Island where you have time to relax, take a walk, have a swim, or enjoy a bite to eat and drink from the on-site fully licensed cafe. The purpose-built catamaran is licensed by DOC (the Department of Conservation) for dolphin viewing and the crew has years of experience locating dolphins in these waters.

SUGGESTED ACTIVITY - Waitangi Treaty Grounds Guided Tour and Cultural Performance

Waitangi is one of New Zealand's most historic sites where the Treaty of Waitangi was signed in 1840 between the Māori and the British Government. This two day pass allows you access to the Treaty of Waitangi Grounds and includes admission to the Te Kōngahu Museum and Te Rau Aroha Museum and a Maori Cultural performance. During your guided tour, learn about the history of the treaty and discover the stories and events that shaped New Zealand. The cultural performance inside the carved meeting house includes waiata (singing), poi and the haka - a war dance Aotearoa-New Zealand is well known for.

SUGGESTED ACTIVITY - Hole in the Rock Scenic Helicopter Flight with Salt Air

This 20 minute scenic flight departs from Paihia and flies over Russell, through the spectacular Bay of Islands and out to the famous Hole in the Rock at Cape Brett. The helicopter departs from Salt Air's heli-pad in central Paihia adjacent to the Paihia wharf and maritime area.

Your accommodation: Sea Spray Suites

Sea Spray Suites offers comfortable and relaxing accommodation close to Paihia's best activities and attractions. Directly across the road is the beautiful Te Ti Beach, exploring Paihia's beautiful waters and wildlife is only a short step away. If you are interested in experiencing New Zealand's heritage, The Waitangi Treaty House is only 1km away.



Day 5



Paihia, Bay of Islands to Snells Beach via Waipoua

From the Bay of Islands you will head west, leaving the Pacific Ocean for the wilder shores of Hokianga and the Tasman Sea. Small towns Omapere and Opononi are reminiscent of days gone by with a vintage seaside feel and are the perfect place to stop for an ice cream in a hot day. To the south is the Kauri coast, which you're about to explore. Head south into the Waipoua Forest, home to giant Kauri trees. Allow time for one of a number of short walks available in the area. Not to be missed is the five minute loop to view the largest Kauri in New Zealand, Tane Mahuta. Backtrack cross-country to the Matakoho Kauri Museum an award winning museum with extensive historical displays. Continue on the road to Snells Beach, a lovely little township close to Warkworth. If you arrive in plenty of time, head into Matakana Wine Country for some great dining options. Another must do while you're here is a day excursion to one of many deserted beaches in the Tawharanui Marine Reserve.

Your accommodation: Snells Beach Motel

Snells Beach Motel is perfectly situated, on the Mahurangi East Peninsula, overlooking the beautiful Kawau Bay and in the heart of the wonderful Matakana Coast Wine Country area.



Day 6



Snells Beach to Coromandel Township

Leave Snells beach, driving from Warkworth and pass through Auckland. As you leave the city boundaries you'll note a change in landscape to lush rolling farmland. Cross the Hauraki Plains, one of the largest dairy producing regions in New Zealand, and take in the abundance of black and white Friesian cows. You'll go through the Thames Estuary, a haven for wildlife - in particular shore birds. If you're keen on birds, a detour to Miranda is worthwhile to spot the many godwits and oystercatchers. Arriving in the old gold town of Thames you have the option of two routes to the Coromandel. Take the road over the ranges and highway 25A will deliver you to the coast in 45 minutes. If you're up for a little longer, more scenic drive, take the route via the Pohutukawa Coast, north to the Coromandel Township. Known as one of the most spectacular drives in the region, it is well worth your time if you can spare the extra minutes.

SUGGESTED ACTIVITY - Driving Creek Railway & Potteries - EyeFull Tower Tour

Driving Creek Railway and Potteries has become a Coromandel icon. The dream of Barry Brickell was to establish a pottery workshop on his land. Using a railway he would have access to the clay on the land and the pine kiln fuel. Over the next 15 years the railway developed until in 1990 it was finally licensed to carry fare paying passengers and ever since thousands of visitors have made the trip to Coromandel to experience this unique attraction. The 1 hour return train trip on the innovatively designed trains takes you through replanted native kauri forest and includes 2 spirals, 3 short tunnels, 5 reversing points and several large viaducts as it climbs up to the mountain-top terminus. The pottery is still producing and you can watch the artists at work as well as purchase items. It is important you read and understand the risks associated with this activity. For more information please see [here](#).

Your accommodation: Coromandel Court Motel

The Motels are in an excellent location with just a 3-minute stroll to shops and restaurants. Well equipped to ensure a comfortable stay.



Day 7



Coromandel Township to Tairua

Head east from Coromandel Township along the scenic coastline of Whangapoua Harbour and Kūaotunu Beach. For this drive leave plenty of time for stops and detours, as there are multiple side roads leading to secluded picnic spots and golden bays. Stop in Whitianga, and grab a bite at one of its many local cafes and eateries. Stretch your legs with a short walking detour and take a ferry over to Cooks Beach and Flaxmill Bay. Continue south, and be sure to take the scenic route down Hot Water Beach Road to Hot Water Beach and the Holiday town of Hahei. Finish your drive to Tairua and feel relaxed as you reach this calm seaside community.

Your accommodation: Pacific Harbour Villas

Pacific Harbour Villas is a perfectly located Tairua accommodation set among lush gardens on the shores of the spectacular Tairua Harbour.



Day 8



Tairua to Rotorua via Tauranga

Today you'll be leaving the Coromandel Peninsula and passing through the town of Whangamata, a popular tourist destination for Kiwi holidaymakers and home to one of the best beaches in the region. Stop in Wahi to view its operational open cast gold mine, just follow the signs to a unique vantage point overlooking the Martha Mine. For rail enthusiasts, be sure to take a trip on the Goldfields Railway along its historic and scenic track. Continue on through the Bay of Plenty and the portside city of Tauranga. Your driving route now takes you along the Pyes Pa Road to Rotorua. If Lord of the Rings is your thing take a detour along State Highway 29 to Matamata, home to the fictional Tolkien village, Hobbiton. As you arrive into Rotorua take in the spectacular lake views along with clouds of steam rising from multiple geysers across the region.

SUGGESTED ACTIVITY - Te Pā Tū Evening Māori Cultural Experience - Dinner Included

New Zealand's Most Awarded Cultural Attraction, presenting Te Pā Tū. Feast on song, drama, tradition, and divine seasonal kai (cuisine) within the forest Pā (village) blanketed by towering Tawa trees, blazing bonfires, and a forest-formed amphitheatre. Te Pā Tū shares Māori history, traditions, and cultural aspirations across 4-hours of celebration and feasting. These events change with each season of the Maramataka, the Māori lunar calendar.

Your accommodation: Quest Rotorua Central

Located in the heart of Rotorua, just a stone's throw from the restaurant and shopping precinct. Purpose built in 2012, all apartments are equipped with modern fixtures, full cooking and laundry facilities that make Quest Rotorua Central your perfect home away from home.



Day 9



Explore Rotorua

Peppered with natural hot springs, boiling mud pools and steaming geysers, Rotorua sits within one of the world's most active volcanic regions. Geothermal landmarks aside, this city of sulphur has a rich indigenous history. Home to several prominent Māori tribes, a visit to one of the Māori experiences should be high on your agenda, learn about the special meaning of pounamu-Greenstone with Mountain Jade, explore the geysers and arts of Te Puia or immerse in an evening with Te Pā Tū. An excursion to one of the area's wellness spas is also a must! Try the Polynesian Spa for an invigorating soak in its natural mineral hot springs, Wai Ariki offers an indulging and unwinding restorative journey or pay a quick visit to Secret Spot for a soak and a delicious smash burger!

If it is a thrill you are looking for, spike your adrenaline at Rotorua Canopy Tours, soaring above the ancient native forest below. Alternatively, head up the Skyline Rotorua Gondola for soaring lake views, and ride the luge at night for an extra thrill.

Make the most of your time in Rotorua with an excursion through the Wai-O-Tapu Thermal Wonderland, one of the area's most colourful volcanic attractions. Whatever you are after, Rotorua is almost certain to have it!

SUGGESTED ACTIVITY - National Kiwi Hatchery Experience

The National Kiwi Hatchery Experience is a special opportunity to gain insight into and view this highly regarded conservation centre. Developed with the visitor experience in mind, the hatchery boasts special viewing opportunities and is hosted by kiwi expert guides who ensure guests leave fully informed and all questions answered. Learn all about New Zealand's intriguing national icon and the efforts of the kiwi husbandry team, see and discover what it takes to hatch and rare chicks, and if you're lucky see baby chicks in person!

SUGGESTED ACTIVITY - Waimangu Volcanic Valley Walk and Boat Cruise Combo

Discover the Waimangu Volcanic Valley on an eco-focused walk and boat cruise through the world's youngest geothermal area, formed after the 1886 Mount Tarawera eruption. Explore vibrant geothermal landscapes, crater lakes, and a thriving ecosystem that emerged from devastation. Relax on a guided Lake Rotomahana cruise while learning about the region's unique history and geothermal wonders. This protected Scenic Reserve and Wildlife Refuge offers an unforgettable experience of Rotorua's volcanic beauty.

SUGGESTED ACTIVITY - Redwoods Nightlights General Admission

Redwoods Nightlights is one of New Zealand's top design led tourism experiences that features 30 exquisite lanterns designed by world-renowned designer and sustainability champion David Trubridge. Floating between 9-20 metres above the forest floor, this eco-tourism walk is 700 metres long, spans across 28 suspension bridges and 27 platforms and takes about 40 minutes to complete.

Your accommodation: Quest Rotorua Central

Located in the heart of Rotorua, just a stone's throw from the restaurant and shopping precinct. Purpose built in 2012, all apartments are equipped with modern fixtures, full cooking and laundry facilities that make Quest Rotorua Central your perfect home away from home.



Day 10



Rotorua to Napier

This drive will take you through the thermal region just south of Rotorua. Home to a plethora of unique geothermal attractions including boiling mud pits, natural hot springs and steaming geysers, this area is a must do before you move on to Napier. Notable attractions are Wai-O-Tapu, Waimangu and Craters of the Moon.

Continue on to Taupō and marvel at the lake, a giant crater formed following a volcanic eruption in the year 180 CE. As you approach the town, be sure to stop at Huka Falls to view the spectacular sight of hundreds of cubic metres of water spilling every second down the narrow 11 metre drop. For an extra thrill take a jet-boat ride at the base of the falls. Leaving Taupō, follow the road as it climbs the rugged Ahimanawa Range before descending back down the Pacific Coast to art deco coastal township of Napier.

Your accommodation: Bella Vista Napier

Bella Vista Motel Napier invites you to experience its friendly service and modern motel units. Located close to shops, restaurants and the renowned Marine Parade with its majestic Norfolk pines.



Day 11



Explore Hawkes Bay

Discover Hawke's Bay, known in Māori as Te Matau-a-Māui or the fish hook of Māui. This is a region renowned for its Mediterranean charm, iconic Art Deco architecture, and award-winning wineries. Explore Mission Estate, the birthplace of New Zealand wine, or tour vineyards for a deeper dive into its winemaking legacy. Fans of the 1930s can enjoy a Vintage Car Tour, showcasing Napier's architectural gems. Outdoor enthusiasts can cycle over 200km of scenic trails or unwind at pristine beaches like Ocean and Waimarama. Indulge your taste buds with local delights, from honey and chocolate to fresh orchard produce. The Hawkes Bay is also home to an abundance of wildlife, head out on a Gannet Safari or educate yourself at the National Aquarium of New Zealand.

SUGGESTED ACTIVITY - Hawkes Bay Half Day Wine Tour with Grape Escape

This wine tasting tour is designed for casual imbibers and wine aficionados. Meet like-minded people and share an appreciation of Hawke's Bay's fantastic wines. Taste great wines made with passion and learn of the area's unique growing conditions. Take home outstanding wines and wonderful memories. Join a fun filled wine tasting afternoon in the sun driving through absolutely stunning scenery. Meet like-minded people and share an appreciation of this region's fantastic wine. Visit four to five wineries and enjoy a cheese platter on the grounds of the Ngatarawa Vineyard beside the lily pond.

SUGGESTED ACTIVITY - Gannet Safaris

Drive along the scenic coast from Napier to Te Awanga and join Gannet Safaris Overland and the world's largest, most accessible gannet colony at Cape Kidnappers. Gannet Safaris has been guiding visitors over Cape Kidnappers for over 35 years and their safaris are the only way to be driven right to within a few feet of these remarkable birds. You will travel in comfort in air-conditioned 4 x 4 wheeled vehicles, through Cape Kidnappers Station - traversing riverbeds, broad rolling pastures, stands of native bush, steep gullies and breath-taking inclines. There is a stop on the way at a spectacular cliff top with panoramic views of Hawke Bay right across to Mahia peninsular. The 36km, three hour trip includes a commentary by your tour guide/driver on the farming operation on Cape Kidnappers Station and an introduction to the gannets. On arrival at the gannets you can stretch your legs and take in the scenery from your position at the brink of the cliff's edge, 100 metres above the ocean!

Your accommodation: Bella Vista Napier

Bella Vista Motel Napier invites you to experience its friendly service and modern motel units. Located close to shops, restaurants and the renowned Marine Parade with its majestic Norfolk pines.



Day 12



Napier to Martinborough

As you leave the rolling countryside of the Hawke's Bay you'll be greeted with some of the country's richest dairy farmland in the Manawatu Gorge. Continue on through the Wairarapa region and stop in the Pukaha Mount Bruce Wildlife Centre, where you can see some of New Zealand native animals. Take another break in Masterson, and visit the interactive Woolshed Museum to learn about sheep farming in New Zealand. As you drive south, a visit to historic Greytown is a must-do. Take in the restored Victorian buildings and make time for a cup of tea at one of its quaint cafes. Leaving state highway 2 you will cross over the Ruamahanga River into Martinborough wine country your destination for the day.

Your accommodation: The Claremont, Martinborough

Set just outside the main village, The Claremont is the ideal base for you to enjoy everything the region has to offer. Well-appointed, self-contained apartments and units will make your stay very comfortable.



Day 13



Martinborough to Wellington City

Cross the Remutaka Ranges as you make your way to New Zealand's capital city, Wellington. Often compared to Melbourne, Wellington is vibrant cultural hub. Home to the nation's centre of government. Legislation happens in the aptly named 'Beehive', an executive wing attached to the Houses of Parliament. At 1km squared, the city centre (easily traversed on foot) has an international feel and is peppered with underground art shows, alleyway cafes and New York style delis. Take in the boardwalk view as you stroll to Te Papa Museum or indulge your cinematic side exploring Weta Workshop, the Oscar Award winning design studio for Lord Of The Rings. For a taste of vintage fashion, spend some time (and dollars!) on Cuba Street browsing the boutiques. Work off last night's dinner with a cycling tour of Oriental Bay and undo your good work with a Hokey Pokey ice-cream in the sun. For those heading further down, the capital is where you board the ferry crossing the Cook Strait to the South Island.

Your accommodation: Adina CityLife Wellington [Formerly Heritage CityLife Wellington]

Adina CityLife Wellington is a suite style hotel with every amenity required for a comfortable stay, as well as being in a superb location to explore the compact city centre. Situated on Lambton Quay, you'll find the best shopping, tourist attractions and cultural landmarks all within easy walking distance.



Day 14



Interislander Ferry Wellington to Picton

The 92 km journey between Wellington and Picton takes around 3 hours and has been described as 'one of the most beautiful ferry rides in the world'. Leaving Wellington Harbour the ferry passes many interesting points such as Pencarrow Head on top of which is New Zealand's oldest lighthouse (1859). Red Rocks is home to a seal colony and Oterangi Bay is the site which recorded the country's highest ever wind speed of 268 kph (167 mph).

From the Cook Strait spectacular views of the Kaikōura Ranges on the South Island can be enjoyed and dolphins and many sea birds are often seen. Around one hour of the cruise takes you through the Marlborough Sounds and this region of bush covered mountains, small islands, crystal clear waters and secluded bays offer remarkable photographic opportunities. The final leg of the cruise travels through Queen Charlotte Sound before coming to an end in the picturesque town of Picton.

Collect Rental Car

Choose a car to best suit your needs from our fantastic rental car range. From compact economy, hatchbacks to prestige SUVs.

Picton to Abel Tasman National Park

From Picton you'll first travel the Marlborough Sounds coastline between Picton and Havelock. This drive offers spectacular views of the sounds, so be sure to allow plenty of time for stops and sightseeing. Take moment to explore the secluded sandy coves along the narrow road to Portage. Aim to arrive in Havelock for lunch, as this portside town has a great variety of cafes and restaurants to eat at. Stop at the famous Pelorus bridge, just outside of Havelock. From here there are a number of forest walks to stretch your legs on with the most popular being a 30 minute loop through beech, rimu and totara forest. Continue on over the Bryant Range to arrive into Tasman Bay and the city of Nelson. Motueka is a further 45 minutes along the coast and from there it's just a short drive to Kaiteriteri and Marahau, all ideal spots from which to explore the beautiful Abel Tasman National Park.

Your accommodation: Ocean View Chalets

The Ocean View Chalets are situated on a 50-acre farmlet, slightly elevated and nestled along the bush line with panoramic sea views. Great access the National Park and close to the friendly Marahau village.



Day 15



Abel Tasman National Park

Experience the golden beauty of Abel Tasman National Park, a coastal paradise renowned for its spectacular hiking track, pristine golden beaches, secluded inlets, and private lagoons. With its mild climate and stunning natural environment, it's a cherished destination for New Zealanders nationwide. Why not enjoy a scenic cruise through the Sounds or take a kayaking tour around its many sheltered bays? Relax to the melodious birdsong and get up close to some of the park's many animal residents, including native bats, geckos, birds, marine mammals, fur seals, and dolphins.

SUGGESTED ACTIVITY - The Two Gods Self Guided Nature Walk & Kayak with Abel Tasman Kayaks - Includes Lunch

This is a fantastic kayak and walk combo in the middle section of the park. Explore the realm of Tangaroa, God of the sea and feel the presence of Tane Mahuta, God of the forest on this trip. This is a trip you will remember for a long long time, as you live and breathe the soul of the Abel Tasman. Abel Tasman Kayaks make getting there and back easy with a water taxi to start and finish the day. It is important you read and understand the risks associated with this activity. For more information please see here.

SUGGESTED ACTIVITY - Abel Tasman National Park Cruise and Walk Open Day Pass

Explore Abel Tasman National Park through scenic cruises and short bush walks. Options include the Vista Scenic Cruise with stops at golden beaches and the Tonga Island Seal Colony, the Pitt Head Loop offering leisurely trails and beach relaxation, or the Seals and Beach adventure combining marine reserve views and a forested hike. Other highlights include the Bark Bay Falls walk and the Swing Bridge, Bush and Beach experience with lush forest trails and Cleopatra's Pool. Each trip combines stunning coastal scenery with immersive nature experiences.

Your accommodation: Ocean View Chalets

The Ocean View Chalets are situated on a 50-acre farmlet, slightly elevated and nestled along the bush line with panoramic sea views. Great access the National Park and close to the friendly Marahau village.



Day 16



Abel Tasman National Park to Kaikōura

Enjoy a stunning journey from the golden beaches of Abel Tasman National Park to the coastal haven of Kaikōura. Travel through the scenic landscapes of the Marlborough region, passing lush vineyards and rugged mountains. You will pass through Marlborough and Blenheim, New Zealand's largest wine-growing regions - and home to many award-winning wines. We recommend timing your day to arrive for lunch with a view to sampling some of the local offerings at one of the 40-plus wineries surrounding the area. Continue over the dry hills of the Marlborough Ranges to one of the most spectacular coastlines in the world, Kaikōura. For over 50km's (30 miles) follow the shoreline. Keep an eye out for an abundance of seals, seabirds and other native wildlife. Kaikōura is also one of the only places in the world where whales can be seen all year round. To the east, you'll see the Pacific Ocean while the West brings views of the towering Kaikōura ranges. Arriving in the Kaikōura township, you'll find it bustling with cafes and restaurants.

Your accommodation: The White Morph, Kaikōura

Set on the Esplanade in Kaikōura, The White Morph enjoys commanding views of the ocean and mountains. Just a 10-minute walk into town, The White Morph has been beautifully placed so that you can take in the spectacular scenery of Kaikoura while enjoying the variety of attractions on offer.



Day 17



Kaikōura

Kaikōura is a breathtaking seaside town teeming with marine life and natural beauty. As you wander through this coastal paradise, you'll be enveloped by the fresh sea breeze and the sounds of the ocean. Begin your adventure by observing the lively fur seal colony at the tip of the peninsula. For an unforgettable experience, board a boat to go whale watching and marvel at the majestic whales that call these waters home year-round. If you're feeling adventurous, take the plunge and swim with the playful dusky dolphins in their natural habitat. For bird enthusiasts, Kaikōura offers the chance to get up close with the native albatross, an awe-inspiring sight. The town is rich with attractions, walking tracks, and activities for every visitor. A walk around the Kaikōura Peninsula is a must, where you can explore tide pools teeming with marine life, observe sea creatures basking on the rocks, and watch seabirds soaring above. Be sure to keep a respectful distance from the sleeping sea lions you might encounter along the way. Ohau Point is another highlight, where you can watch fur seals frolic in their natural environment. To delve into Kaikōura's fascinating history, visit Fyffe House. This historic whaler's cottage offers a glimpse into the town's whaling past and its evolution over the years. No trip to Kaikōura is complete without sampling the local seafood. Renowned for having some of the best fish and chips in the country, Kaikōura's eateries serve fresh catches straight from the morning's haul, ensuring a delicious and authentic dining experience. If you need a break from the action, unwind at Lavendyl Lavender Farm. Stroll through the fragrant lavender fields, relax in the serene atmosphere, and browse the gift shop for a variety of lavender products. Kaikōura seamlessly blends adventure, history, and relaxation, making it a perfect destination for travellers seeking a unique and enriching experience.

SUGGESTED ACTIVITY - Ocean's Cabin with Whale Watch Kaikōura

Experience New Zealand's only marine-based whale-watching company. Whale Watch Kaikōura offers a once-in-a-lifetime, up-close encounter with the giant Sperm Whale. You are also likely to encounter New Zealand fur seals, dolphins, and albatross. Depending on the season you may also see Pilot, Blue, and Southern Right whales as well as migrating humpbacks. Often orcas can be spotted here and the world's smallest dolphin, the Hector's, occasionally makes an appearance.

SUGGESTED ACTIVITY - Albatross Tour with Encounter Kaikōura

A world renowned marine reserve, Kaikōura is brimming with marine life and ocean-going birds. It is the Albatross capital of the world and has up to 14 different species visiting the area throughout the year. You'll be taken by boat, 15 minutes off the coast where a huge range of elusive and usually inaccessible albatross can be sighted. You'll also see penguins, gannets, skuas, shearwaters petrels and terns. Travel in a dedicated albatross encounter vessel, adapted specifically for maximum wildlife viewing opportunities.

Your accommodation: The White Morph, Kaikōura

Set on the Esplanade in Kaikōura, The White Morph enjoys commanding views of the ocean and mountains. Just a 10-minute walk into town, The White Morph has been beautifully placed so that you can take in the spectacular scenery of Kaikōura while enjoying the variety of attractions on offer.



Day 18



Kaikōura to Christchurch

Travel down the coast before heading inland through the North Canterbury wine region - the Waipara Valley. If you've time on your hands we recommend taking a detour to Hanmer Springs for relaxing dip in its thermal pools. Arriving into Christchurch you'll see a new and improved city, steadily rising from the ruins of the 2011 and 2010 earthquakes.

SUGGESTED ACTIVITY - Willowbank Wildlife Reserve

Nowhere else in New Zealand will you find such a wide range of New Zealand wildlife so close to you. Willowbank provides you with a "Kiwi Guarantee" and is home to New Zealand's largest and most accessible Kiwi viewing area. With this unique experience, you will see New Zealand's natural splendor firsthand, and view Kiwis that are not hidden behind glass. You will explore one of the most complete selections of New Zealand native and introduced wildlife in natural bush surroundings. Much of the Willowbank wildlife wander free and can be petted and fed.

Choose to explore the reserve yourself, or for an up-close Kiwi experience, you can take a guided tour.

Your accommodation: Quest on Cambridge

Quest on Cambridge serviced apartment-style hotel rooms offer guests a relaxed and comfortable Christchurch accommodation experience. Each room has an open-plan living area, a fully equipped kitchen, and natural light. Quest on Cambridge is a short walk from the south shopping centre and to the Botanic Gardens.



Day 19



Explore Christchurch

Following earthquakes that razed its centre and much of the outlying suburbs, Ōtautahi-Christchurch is well into a billion-dollar makeover. In the middle of the Canterbury Plains, bordering the Pacific Ocean, New Zealand's newest city is an ideal gateway to exploring the middle of the South. Go punting on the Avon River, take a historic tram ride, catch the gondola to the rim of an extinct volcano or do all three! See the world's only Cardboard Cathedral and for nature enthusiasts - wander the renowned Christchurch Botanic Gardens, or head to Oxford Terrace in the city to find a great spot to eat or drink. Drive an hour in any direction to ski, mountain bike, wine taste, whale-watch, bungee jump or play golf. Take the winding Port Hills road to the French settlement of Akaroa & Banks Peninsula and tour the vines in Waipara for an authentic New Zealand wine-tasting experience.

SUGGESTED ACTIVITY - Lord of the Rings Edoras Tour with Hassle Free Tours - Lunch Included

Step into the world of Middle-earth on the Lord of the Rings Edoras Tour and visit the stunning filming location of Edoras at Mt Potts High Country Station. Explore the remote and breathtaking Mt Sunday, transformed into the capital city of Rohan for the iconic trilogy. Immerse yourself in the unspoiled beauty of this incredible area, surrounded by crystal-clear lakes, vibrant blue rivers, and crisp mountain air. A must-do experience for any Lord of the Rings fan!

Please note: Visiting these special locations involves a 5.5 hour driving journey, which is balanced by numerous scenic stops and breaks for morning tea and lunch. The hike to the summit of Mt Sunday/Edoras itself is approximately a 20 minute ascent (and descent) that requires a reasonable level of fitness.

SUGGESTED ACTIVITY - Christchurch Triple Pass - Tram, Punting and Gondola

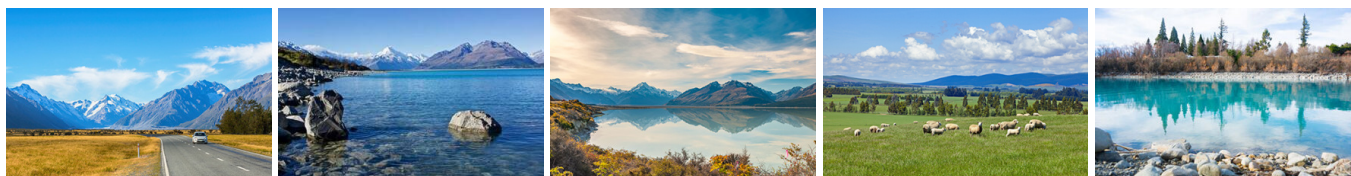
Experience three of Christchurch's iconic attractions in one day: the Christchurch Tram, Christchurch Gondola, and Punting on the Avon River. The historic tram is a delightful way to explore the evolving inner city, taking in the various sights with the hop-on hop-off pass and learning about the city from the live commentary. You'll also enjoy a bird's eye view of Christchurch and the Canterbury region including the distant peaks of the Southern Alps when you ride the gondola cableway to the top of the Port Hills in Heathcote Valley. Punting on the Avon River takes you through the city's green belt: a relaxing way to explore what is affectionately known as the 'Garden City'.

Your accommodation: Quest on Cambridge

Quest on Cambridge serviced apartment-style hotel rooms offer guests a relaxed and comfortable Christchurch accommodation experience. Each room has an open-plan living area, a fully equipped kitchen, and natural light. Quest on Cambridge is a short walk from the south shopping centre and to the Botanic Gardens.



Day 20



Christchurch to Aoraki-Mt Cook National Park

Drive through the heart of the South Island, crossing the vast Canterbury plains. Catch your breath in Geraldine before continuing through Fairlie. Ascending Burkes pass you'll come to the picturesque town of Lake Tekapo. Follow the road and take in the view of Aoraki-Mt Cook (New Zealand's tallest mountain) from the shores of Lake Pukaki, known for its glacier fed turquoise blue colour. Continue along the lake to your final destination Aoraki-Mt Cook Village.

SUGGESTED ACTIVITY - Glacier Explorers

Experience 500-year-old icebergs up close on the Aoraki-Mt Cook terminal lake. The Glacier Explorers tour is the only one of its kind in New Zealand and one of only three in the world! Very few glaciers terminate into lakes and even fewer of them are accessible. See towering ice cliffs and floating icebergs from the safety of a specially designed boat. These boats provide a safe way to view unseen and inaccessible areas of New Zealand's largest glacier The Tasman.

SUGGESTED ACTIVITY - Mountain High Scenic Flight with The Helicopter Line

The premier flight over this amazing alpine region with vast snowfields, glaciers and a spectacular view of New Zealand's highest peak, Aoraki/Mount Cook. Land high above glaciers and experience what it feels like to stand in snow amongst the mountains. Traverse the Southern Alps to view the mighty Fox and Franz Josef Glaciers as they journey slowly down towards the native rainforests and the Tasman Sea on the rugged West Coast.

SUGGESTED ACTIVITY - Sir Edmund Hillary Alpine Centre Museum and Theatre Explorer Pass with Hermitage

A tribute to New Zealand's Sir Edmund Hillary, a humanitarian, ambassador, and one of the world's greatest explorers. The centre showcases the Aoraki Mount Cook region, the history of climbing, and early transport used throughout the region. This comprehensive museum details the life of Sir Edmund Hillary, the Hermitage, and provides access to the 126-seat custom-designed theatre. Check out the daily film schedule which includes 3D Movies, documentaries, and 360-degree digital dome features.

Your accommodation: Mt Cook Motel

Mt Cook Motel, nestled in the heart of Mt. Cook Village, offers spacious self-contained units that provide comfort and convenience. Each unit is surrounded by breathtaking alpine mountain views, making it the perfect retreat for nature lovers and adventurers alike.



Day 21



Aoraki Mt Cook National Park to Dunedin

Leave Aoraki Mt Cook National Park and travel past Twizel, one of the locations for the Lord of the Rings films. Go through Oamaru, the gliding capital of New Zealand. Continue down the Waitaki Valley follow the hydro power generating system towards the east coast. Stretch your legs in Oamaru, known for its white stone buildings constructed with the local Oamaru Stone and Steampunk influence. If you were a little late off the mark this morning you may get the chance to see the blue penguins come ashore at dusk. Continue south down the coast to Moeraki, and take a detour towards the beach to see the Moeraki Boulders, a unique geological feature well worth a look. As you arrive in Dunedin, take in the city's Edwardian and Scottish heritage reflected in the buildings around the city centre The Octagon.

SUGGESTED ACTIVITY - Speights Brewery Tour

Founded in 1876, the Speights Brewery still occupies its original Dunedin site - with several of its buildings dating back to the late 1800's. One of the only remaining 'gravity breweries' in the world, this 60-minute tour explains its inner workings. There is an opportunity to taste six different beers as well as bottle, cap and brew your own personal Speights Gold Medal Ale - the brewery's flagship beer.

Your accommodation: Motel on York

Motel on York is located in the heart of Dunedin city. The property offers superior accommodation only 300 metres away from cafes and restaurants.



Day 22



Explore Dunedin and the Otago Peninsula

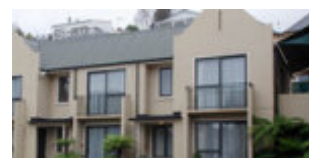
Known as the Edinburgh of the South, Dunedin City has a heavy Scottish influence. Surrounded by rugged coastal plains and windswept beaches it's home to an eclectic mix of historical and modern architecture as well as industrial technology. Renowned for its Flemish Baroque-inspired 'gingerbread house' Railway Station, this university town is bustling with life. Head to the Saturday farmers market held in the aforementioned railway grounds for a taste of organic produce, handmade crepes and local honey. Explore the many cafes and wine bars in The Octagon, then continue on a self-guided walking tour of the internationally acclaimed Street Art dotted around the city. Drive to the coast and watch the freighters passing in the distance while you sunbathe, or hire a mountain bike and test your legs on one of the many trails available in the area. For a more immersive historical experience, follow the coast to New Zealand's only castle, Larnach Castle. On your way back be sure to head to the Otago Peninsula to see the largest mainland Albatross colony in the world.

SUGGESTED ACTIVITY - Castle to Cruise Tour and Penguin Experience with Monarch

Today you'll explore the wildlife and history of the Otago Peninsula You'll be welcomed to the MV Monarch for a wildlife cruise around Taiaroa Head, home to the world's only mainland nesting site for royal albatross. Scattered along the rocks you'll also see fur seals basking in the sun and possibly sea lions on the beach. In the water, you may also see penguins, dolphins, and other marine birds. Back on land, you'll take a guided tour of New Zealand's only castle, Larnach Castle built in 1871. Learn of the scandals and history of the castle and explore the beautiful garden of international significance. Your final stop of the day is to The Otago Peninsula Eco Restoration Alliance (formally Penguin Place), a natural nesting site for the rarest penguin in the world, the Yellow Eyed Penguin.

Your accommodation: Motel on York

Motel on York is located in the heart of Dunedin city. The property offers superior accommodation only 300 metres away from cafes and restaurants.



Day 23



Dunedin to Te Anau (via Invercargill)

The drive to Te Anau takes you through classic Southland farming scenery. Head off-the-beaten-track today and follow the coastline instead of the inland route. Go through The Catlins area and be sure to take a detour to Kaka Point to view its majestic cliffs and pounding surf. If time permits, keep driving towards Nugget Point, iconic for its steep headland with a lighthouse perched atop. Continue through Invercargill to Riverton and Colac Bay, and then head north to Manapouri. From here you can embark on a day or overnight cruise to the remote Doubtful Sound, renowned for its natural beauty. Just a short way further will bring you to your lakeside destination of Te Anau, gateway to Fiordland National Park and Milford Sound.

SUGGESTED ACTIVITY - Te Anau Glowworm Caves with RealNZ

Begin your Te Anau Glowworm experience with a scenic cruise across Lake Te Anau on board the luxury catamaran, Luminosa, to the western side of the lake. On arrival, you'll enter the caves through Cavern House, where informative displays detail the history of this 12,000 year old underground network. You'll then explore by limestone pathway while your guide points out hidden whirlpools, sculpted rock formations, and a rushing underground waterfall. See a magical display of thousands of glowworms as you glide through the darkness in a small boat.

Your accommodation: Lakefront Lodge

Stylish self-contained motel units less than a minute walk from Te Anau Lakefront. Enjoy a close walk to shops, cafes and restaurants.



Day 24



Te Anau to Milford Sound, returning to Te Anau

The magnificent Milford Road leading to Milford Sound offers some of the most beautiful and iconic scenery in the country. Countless photo opportunities mean this drive should not be rushed. From crystal clear lakes and towering mountains to lush glacier-formed meadows, this area is abundant with picture-perfect scenes. Continue on through the Homer Tunnel, an engineering marvel at 1219 meters long. Arriving in the village of Milford, you will be greeted with an amazing view of Mitre Peak. A day cruise into the heart of the sound is not to be missed. You'll learn about how this magnificent area was formed and experience the wonder of the falls that line the Fjord before back-tracking the way you came.

Milford Sound Cruise with Real NZ - Lunch Included

Get up close and personal with Milford Sound on a leisurely cruise of this spectacular fiord. From thundering waterfalls to sky-high mountains to lush rainforests, Milford has it all. Experience the spray of a waterfall as you cruise close to sheer rock faces. Informative, participative and relaxed, this is the perfect way to experience Milford Sound to the fullest.

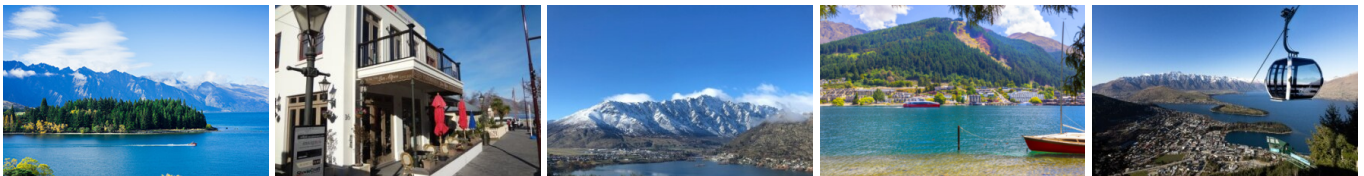
Your accommodation: Lakefront Lodge

Stylish self-contained motel units less than a minute walk from Te Anau Lakefront. Enjoy a close walk to shops, cafes and restaurants.

Meals included: Lunch



Day 25



Te Anau to Queenstown

Journey across expansive tussock lands en route to Queenstown. Pass through Mossburn, renowned as the deer capital of New Zealand, and continue through the picturesque Southland countryside. As the road begins to trace the edge of Lake Wakatipu, marvel at the breathtaking views from the Devil's Staircase. Finally, approach Queenstown, the adventure capital of New Zealand, with the Remarkables mountain range standing majestically in the backdrop.

SUGGESTED ACTIVITY - TSS Earnslaw Cruise and Walter Peak Gourmet BBQ Dinner

Enjoy a quintessential Kiwi experience, a delicious gourmet BBQ buffet meal, and a farm demonstration in a stunning lakeside setting. Take in the stunning views of Lake Wakatipu and its surroundings as you cruise across the lake to the historic Walter Peak high country farm aboard the TSS Earnslaw Steamship. Enjoy the ambiance of the heart of the stately homestead while your Colonel's Homestead Restaurant chef prepares a gourmet BBQ dinner. Your seasonal menu includes an extensive selection of local New Zealand produce, including succulent meats and a selection of delicious vegetables and salads. Complete your meal with your choice of delicious desserts, or New Zealand cheeses. After dinner, watch the farm dogs in action with a sheep-herding demonstration and say hello to the other farm animals. Finally, cruise home under the southern stars and enjoy the fresh night air as the lights of Queenstown draw ever closer.

Your accommodation: Scenic Suites Queenstown

Scenic Suites Queenstown offers guests exquisite style, comfort and spectacular views over Lake Wakatipu and the Southern Alps. The hotel prides itself on its 4-star hospitality that will make your stay in Queenstown even more memorable.



Day 26



Explore Queenstown

Well-known as New Zealand's 'adventure capital', Queenstown is home to a range of adventures, from the world's first and most famous bungy jumps to jet boat thrills, white-water rafting, and skydiving. However, Queenstown offers far more than a fast-paced, action-packed holiday. Settled on the shores of beautiful Lake Wakatipu beneath a soaring panorama of the Remarkables Mountain Range, this alpine town is surrounded by many historic, gastronomic, and scenic wonders. Take a stroll through the beautiful lakefront parks and gardens, browse through market stalls on weekends, dine in wonderful al-fresco restaurants, or ride on the 100-year-old historic Steamship - TSS Earnslaw to Walter Peak Station. Take the Queenstown Gondola up to Bob's Peak and soak up the panoramic views of the magnificent lake and mountain ranges. And after all of that, if you do want the adrenaline rush, Queenstown is known for taking your pick from the Shotover Jet, Canyon Swing, Zipline, Luge, or Heli-hike.

SUGGESTED ACTIVITY - Wilderness Jet Experience with Dart River Safaris

Journey deep into the heart of the world-renowned Mt Aspiring National Park, where myth, heritage, and fantasy come to life. As one of Queenstown's most exhilarating activities, the Wilderness Jet adventures on a spectacular journey deep into the heart of the world-renowned Mount Aspiring National Park.

SUGGESTED ACTIVITY - Shotover Jet Canyon Jet Boat Ride

Shotover Jet is the only company permitted to operate in the Shotover River Canyons. It's a thrilling ride! Skim past rocky outcrops at close range in your Shotover Jet 'Big Red', as you twist and turn through the narrow canyons at breathtaking speeds. And a major highlight - hold tight for the world-famous Shotover Jet full 360-degree spins!

SUGGESTED ACTIVITY - Lord of the Rings Glenorchy Tour with Nomad Safaris

For those keen on Lord Of The Rings this is the tour for you. Go on a scenic adventure through some of the iconic locations used in the filming. Although none of the sets are left behind, the landscapes will be instantly recognisable. Follow the shores of Lake Wakatipu to the small town of Glenorchy and enjoy the spectacular views of the Remarkables Range as you drive. From Glenorchy, you'll head into the beech forests of Paradise, located on the outskirts of Mount Aspiring National Park - before heading up the Dart Valley and back. Film locations you'll see include Isengard, Lothlorien, Ithilien Camp and the Seat of Seeing.

SUGGESTED ACTIVITY - Gondola and Buffet Dinner with Skyline Queenstown

With breathtaking views across Queenstown and Lake Wakatipu, the Skyline Complex is a must-do. Catch the fully enclosed gondola to the summit for a remarkable panorama of the city's surroundings. Wander the outdoor viewing decks then enjoy a gourmet buffet meal in the Stratosphere Restaurant.

Your accommodation: Scenic Suites Queenstown

Scenic Suites Queenstown offers guests exquisite style, comfort and spectacular views over Lake Wakatipu and the Southern Alps. The hotel prides itself on its 4-star hospitality that will make your stay in Queenstown even more memorable.



Day 27



Queenstown to Franz Josef Glacier via Wānaka

From Queenstown you'll cross the Crown Range, the highest sealed road in New Zealand to arrive in the Alpine town of Wānaka, gateway to Mt Aspiring National Park. Skirting the shores of both Lake Wanaka and Hawea, you will enter the small town of Makarora. Stop at Blue Pools for a 1-hour return walk through the native beech forest to a glacier-fed swimming hole. Continue on through the remote seaside settlement of Haast before heading up the wild West Coast highway you pass through ancient temperate rainforests while getting sneak peeks of the wild coast beaches occasionally. Paringa Salmon Farm is worth a stop to stretch your legs, feed the fish, and stop for lunch and refreshments. Keep heading North and be sure to enjoy the view of the ever-changing towering snowcapped Southern Alps Mountain Range. Fox Glacier welcomes you first, then comes your destination for the night Franz Josef township.

Your accommodation: Punga Grove Motel & Suites

Punga Grove is right in the heart of Franz Josef Glacier village stylish accommodation in a beautiful rainforest setting.



Day 28



Explore Franz Josef

Franz Josef is a small yet lively town in the heart of New Zealand's West Coast, best known for its spectacular 12 km-long glacier. The township is surrounded by lush, rainforest-clad mountains and has a vibrant atmosphere with plenty to explore. A variety of scenic walking trails offer incredible views of the glacier, but for a truly up-close experience, a licensed helicopter tour is the only way to set foot on the ice. Beyond the glacier, unwind in the rejuvenating Hot Pools or visit the West Coast Wildlife Centre to spot rare kiwi birds. If you're in the mood for a more relaxed day, the township is home to charming souvenir and gift shops, as well as great dining spots like SnakeBite Brewery and King Tiger. Whether you're chasing adventure or relaxation, Franz Josef is a stunning blend of wild beauty and welcoming hospitality.

SUGGESTED ACTIVITY - Twin Glacier Scenic Helicopter Flight with The Helicopter Line

A spectacular scenic flight soaring over two of New Zealand's most famous glaciers, Fox and Franz Josef. Landing at the head of one and view the incredible sight of this frozen river as it winds its way through ancient carved valleys.

SUGGESTED ACTIVITY - Franz Josef Glacier Helihike with Franz Josef Glacier Guides

After a thrilling scenic flight, high above the rugged terrain, you will land on the glacier, ready to undertake a 2.15 hour guided glacier hike. Your friendly guide will lead you through some of the most pristine and awe-inspiring glacial scenery in the world. Your guide will choose your route carefully as you go and, with an eye for the most spectacular ice formations, you'll soon be making your way through an extraordinary landscape of towering peaks and glistening blue ice. It is important you read and understand the risks associated with this activity prior to travel. For more information please see here.

Your accommodation: Punga Grove Motel & Suites

Punga Grove is right in the heart of Franz Josef Glacier village stylish accommodation in a beautiful rainforest setting.



Day 29



Franz Josef to Greymouth Train Station

Head north along the mighty West Coast highway you pass through ancient temperate rainforests while getting sneak peeks of the wild coast beach occasionally. Whataroa is the next town where you can see one of the world's rarest birds, the Kōtuku - White Heron. The Kōtuku nest at the Waitangi Roto Nature Reserve, only accessible with a guided tour from October to March. The next town is Ross which is the site of an old gold mining settlement where the local information centre offers you the chance to pan for gold. Hokitika is a great place to explore craft and gift stores and head to the coast and take in the endless sea views. The Pounamu-Greenstone on offer in Hokitika is probably some of the best you will see in the country. Continue on to Greymouth, the largest town on the West Coast and the starting point for the next leg of your journey the TranzAlpine Scenic Train. Drop your rental car at the Greymouth Train Station depot located at the train station building before boarding your train to Christchurch.

TranzAlpine Scenic Train: Greymouth to Christchurch

Considered one of the world's great train journeys, the TranzAlpine Scenic Train takes you from Greymouth to Christchurch. Travel across the South Island from the west to the east coast through Arthur's Pass National Park. From the comfort of your carriage see lush beech forest, deep river valleys and the spectacular peaks of the Southern Alps. Descend to the windswept Canterbury Plains before arriving in the city of Christchurch.

Shared Transfer from Christchurch Train Station to Christchurch CBD Accommodation with Christchurch Touring Company

On arrival at the Christchurch railway station, you will be met by a driver and transferred to your Christchurch accommodation.

Your accommodation: Quest on Cambridge

Quest on Cambridge serviced apartment-style hotel rooms offer guests a relaxed and comfortable Christchurch accommodation experience. Each room has an open-plan living area, a fully equipped kitchen, and natural light. Quest on Cambridge is a short walk from the south shopping centre and to the Botanic Gardens.



Day 30



Private Transfer from Christchurch Accommodation to Christchurch Airport with Christchurch Touring Company

A private transfer will collect you from your accommodation and transfer you to Christchurch Airport in time for your departing flight.

Farewell from Aotearoa-New Zealand

Bid farewell to New Zealand, taking with you unforgettable memories of its breathtaking landscapes and incredible adventures. In Maori, it is said mā te wā, which is not goodbye, it is see you soon!

Tour details

Departures:	Daily
Tour type:	Nationwide Self Drive
Starts:	Auckland
Finishes:	Christchurch
Tour length:	30
Accommodation:	Motels
Car/transport type:	

Included activities

Includes	Private train station transfers
Includes	Private airport transfers
Includes	TranzAlpine Train from Greymouth to Christchurch
Includes	Interislander ferry crossing
Includes	Real Journeys Milford Sound Cruise

Accommodation summary

Day 1	Nesuto Stadium Hotel and Apartments
Day 2	Nesuto Stadium Hotel and Apartments
Day 3	Sea Spray Suites
Day 4	Sea Spray Suites
Day 5	Snells Beach Motel
Day 6	Coromandel Court Motel
Day 7	Pacific Harbour Villas
Day 8	Quest Rotorua Central
Day 9	Quest Rotorua Central
Day 10	Bella Vista Napier
Day 11	Bella Vista Napier
Day 12	The Claremont, Martinborough
Day 13	Adina CityLife Wellington [Formerly Heritage CityLife Wellington]
Day 14	Ocean View Chalets
Day 15	Ocean View Chalets
Day 16	The White Morph, Kaikōura
Day 17	The White Morph, Kaikōura
Day 18	Quest on Cambridge
Day 19	Quest on Cambridge
Day 20	Mt Cook Motel
Day 21	Motel on York
Day 22	Motel on York
Day 23	Lakefront Lodge
Day 24	Lakefront Lodge
Day 25	Scenic Suites Queenstown
Day 26	Scenic Suites Queenstown
Day 27	Punga Grove Motel & Suites
Day 28	Punga Grove Motel & Suites
Day 29	Quest on Cambridge