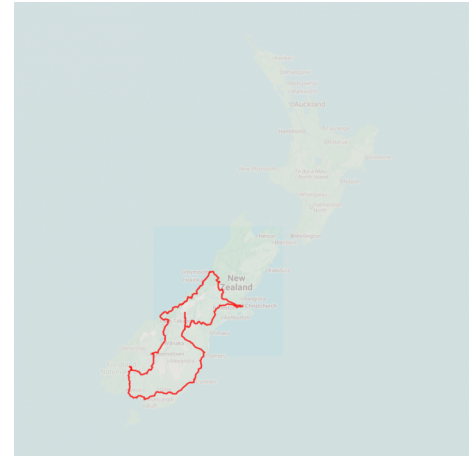


A Taste of the South

This 8 day scenic route will give you a wonderful 'taste' of the South Island's beauty and diversity. Visit its two largest cities, Christchurch and Dunedin, Mt Cook National Park and Te Anau the gateway to Fiordland National Park. You then experience the excitement of Queenstown before heading north to the unique West Coast Glacier region. The finale to this tour is crossing the Southern Alps on board the TranzAlpine Scenic Train as you return to Christchurch.

Starts in: Christchurch
Finishes in: Christchurch
Length: 8days / 7nights
Accommodation: Hotel 3 star
Can be customised: Yes

This itinerary can be customised to suit you perfectly. We can add more days, remove days, change accommodations, mix it up, add activities to suit your interests or simply design and create something from scratch. Call us today to get your custom New Zealand itinerary underway.



Inclusions:

Includes: Late model rental cars
Includes: Fully inclusive rental car insurance (excess may apply)
Includes: Unlimited kms
Includes: Afterhours emergency support while touring
Included activity: Private Transfer Christchurch International Airport to Christchurch Accommodation
Included activity: Electronic Travel Guide and In-Country Support App
Included activity: The Visitor Promise - Cultural Learning Course
Included activity: TranzAlpine Scenic Train: Greymouth to Christchurch
Included activity: Shared Transfer from Christchurch Train Station to Christchurch CBD
Accommodation with Christchurch Touring Company
Included activity: Private Transfer from Accommodation to Airport with Christchurch Touring Company

Day 1



Private Transfer Christchurch International Airport to Christchurch Accommodation

On arrival, you will be met by a private driver and transferred to your Christchurch accommodation.

Welcome to Christchurch City

New Zealand's garden city is steadily being transformed into a vibrant urban destination. Encompassing a large green belt, it is known for its wide tree lined avenues and lush gardens. A great way to explore the city or easy way to see the sights or ride the historic trams across town to the renowned botanic gardens and the unique cardboard Transitional Cathedral, that's right it is built of cardboard!

SUGGESTED ACTIVITY - Discover Christchurch Afternoon Tour with Leisure Tours

A half-day sightseeing tour of Christchurch highlighting both the damage to the city inflicted by several large earthquakes in 2010 and 2011 and the rebuild which is currently in progress, together with the surviving beauty of the city and the historical landmarks. Experience the grand architecture, beautiful gardens, and scenic viewpoints on a half-day city tour of Christchurch.

Your accommodation: Scenic Hotel Cotswold

The Scenic Hotel Cotswold is just a few minutes walk to boutique shopping at Merivale and Hagley Park. The distinctive architecture of the Scenic Hotel Cotswold reflects Christchurch's image as the most English of cities outside of England.



Day 2



Collect Rental Car

This tour's from price includes an intermediate-sized vehicle, setting you up for comfortable travels. Yet, we understand every adventure is unique! Feel free to select the perfect wheels from our incredible collection of rental cars, spanning from economy hatchbacks to premium SUVs.

Christchurch to Twizel (via Aoraki Mt Cook National Park)

Today you head into the heart of the South Island. Crossing the vast Canterbury Plains along the inland scenic route, Geraldine offers an ideal stop before you head into Mackenzie country. Ascending Burkes Pass, you'll enter New Zealand's high country. The picturesque town of Lake Tekapo, is the first of the large Southern Lakes on your journey. Enjoy the magnificent views from the shore, boat or air by taking a scenic flight. On arriving at Lake Pukaki, you'll be rewarded with a spectacular views of Aoraki Mt Cook, towering over the lake. Driving along the lake, you'll find your destination, Mt Cook Village. Enjoy Aoraki Mt Cook National Park by having a glacier landing with ski plane or helicopter, kayaking on a glacial lake or by walking one of the many tracks. At The Hermitage Hotel the Sir Edmund Hillary Centre is a must see. Return along the shores of Lake Pukaki to Twizel, your base for the evening.

SUGGESTED ACTIVITY - Sir Edmund Hillary Alpine Centre Museum and Theatre Explorer Pass with Hermitage

A tribute to New Zealand's Sir Edmund Hillary, a humanitarian, ambassador, and one of the world's greatest explorers. The centre showcases the Aoraki Mount Cook region, the history of climbing, and early transport used throughout the region. This comprehensive museum details the life of Sir Edmund Hillary, the Hermitage, and provides access to the 126-seat custom-designed theatre. Check out the daily film schedule which includes 3D Movies, documentaries, and 360-degree digital dome features.

Your accommodation: Distinction MacKenzie Country Hotel, Twizel

Located in the heart of the Mackenzie region the hotel's natural stone architecture complements the mountains and rivers of New Zealand's Southern Alps. With 108 well equipped rooms the hotel can offer every facility needed for a comfortable stay.



Day 3



Twizel to Dunedin

The next town south is Oamaru and the Wrinkly Rams cafe makes an interesting coffee stop. Heading down the Waitaki valley, from Oamaru, you follow the hydro power generating system towards the east coast. The town of Oamaru is most famous for its white stone buildings, constructed with the local 'Oamaru Stone'. From the harbour, you can see blue penguins come ashore at dusk as they return from their day at sea. Further south the Moeraki Boulders are a unique geological feature and worth the short detour to the beach to view. Arriving into Dunedin, you can appreciate the city's Edwardian and Scottish heritage through its fine buildings particularly around the Octagon.

SUGGESTED ACTIVITY - Larnach Castle and Gardens

Larnach Castle, New Zealand's only castle, was built in 1871 by politician and merchant William Larnach, a visionary who played a key role in shaping the country's early history. Constructed for his beloved first wife, Eliza, the castle's shell took 200 workmen three years to complete, followed by twelve years of intricate interior craftsmanship. Perched high on the Otago Peninsula, the castle offers stunning views over Dunedin City. Its gardens hold International Garden of Significance status and feature a unique collection of antiques, including a rare nine-piece Totara knot suite. The Ballroom Café provides the perfect spot to relax and enjoy refreshments while reflecting on your visit. The ballroom itself has a fascinating history, having once served as an asylum, an antique sales room, and even a sheep pen before its beautiful restoration. With a self-guided tour, you can explore the castle and gardens at your own pace.

Your accommodation: Kingsgate Hotel Dunedin

Located right in the heart of the city, Kingsgate Hotel Dunedin has the CBD right at its doorstep. The Otago Museum is just a stroll away, while the beach is a mere 10-minute drive. This hotel boasts sunny north-facing guest rooms, brimming with amenities. All rooms feature balconies, an excellent vantage point to view the city.



Day 4



Dunedin to Te Anau (via Invercargill)

The drive to Te Anau takes you through classic Southland farming scenery. Head off-the-beaten-track today and follow the coastline instead of the inland route. Go through The Catlins area and be sure to take a detour to Kaka Point to view its majestic cliffs and pounding surf. If time permits, keep driving towards Nugget Point, iconic for its steep headland with a lighthouse perched atop. Continue through Invercargill to Riverton and Colac Bay, and then head north to Manapouri. From here you can embark on a day or overnight cruise to the remote Doubtful Sound, renowned for its natural beauty. Just a short way further will bring you to your lakeside destination of Te Anau, gateway to Fiordland National Park and Milford Sound.

SUGGESTED ACTIVITY - Te Anau Glowworm Caves with RealNZ

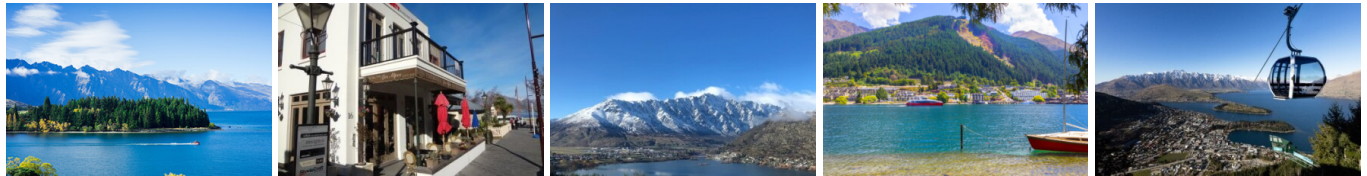
Begin your Te Anau Glowworm experience with a scenic cruise across Lake Te Anau on board the luxury catamaran, Luminosa, to the western side of the lake. On arrival, you'll enter the caves through Cavern House, where informative displays detail the history of this 12,000 year old underground network. You'll then explore by limestone pathway while your guide points out hidden whirlpools, sculpted rock formations, and a rushing underground waterfall. See a magical display of thousands of glowworms as you glide through the darkness in a small boat.

Your accommodation: Kingsgate Hotel Te Anau

Kingsgate Hotel is conveniently located only a short five-minute walk along the shore of beautiful Lake Te Anau to reach the town centre. The hotel is set amongst manicured gardens on the tranquil shores of Lake Te Anau.



Day 5



Te Anau to Queenstown

Journey across expansive tussock lands en route to Queenstown. Pass through Mossburn, renowned as the deer capital of New Zealand, and continue through the picturesque Southland countryside. As the road begins to trace the edge of Lake Wakatipu, marvel at the breathtaking views from the Devil's Staircase. Finally, approach Queenstown, the adventure capital of New Zealand, with the Remarkables mountain range standing majestically in the backdrop.

SUGGESTED ACTIVITY - Shotover Jet Canyon Jet Boat Ride

Shotover Jet is the only company permitted to operate in the Shotover River Canyons. It's a thrilling ride! Skim past rocky outcrops at close range in your Shotover Jet 'Big Red', as you twist and turn through the narrow canyons at breathtaking speeds. And a major highlight - hold tight for the world-famous Shotover Jet full 360-degree spins! It is important you read and understand the risks associated with this activity. For more information please see [here](#).

SUGGESTED ACTIVITY - TSS Earnslaw Cruise and Walter Peak Gourmet BBQ Dinner

Enjoy a quintessential Kiwi experience, a delicious gourmet BBQ buffet meal, and a farm demonstration in a stunning lakeside setting. Take in the stunning views of Lake Wakatipu and its surroundings as you cruise across the lake to the historic Walter Peak high country farm aboard the TSS Earnslaw Steamship. Enjoy the ambiance of the heart of the stately homestead while your Colonel's Homestead Restaurant chef prepares a gourmet BBQ dinner. Your seasonal menu includes an extensive selection of local New Zealand produce, including succulent meats and a selection of delicious vegetables and salads. Complete your meal with your choice of delicious desserts, or New Zealand cheeses. After dinner, watch the farm dogs in action with a sheep-herding demonstration and say hello to the other farm animals. Finally, cruise home under the southern stars and enjoy the fresh night air as the lights of Queenstown draw ever closer.

Your accommodation: Ramada Hotel & Suites Queenstown Central

Ramada Hotel & Suites offers well-appointed apartment-style rooms located in the heart of Queenstown. Experience tranquillity all year round, overlooking the shores of Lake Wakatipu and within walking distance of Queenstown's central shopping and entertainment area.



Day 6



Queenstown to Fox Glacier

Crossing the Crown Range the highest sealed road in the country, you'll pass through the alpine town of Wanaka. Following the shores of both Lake Wanaka and Hawea, you'll enter the township of Makarora, the gateway to Mt. Aspiring National Park. Stretch your legs on a walk to Blue Pools, a ten-minute stroll through lush rainforest. Marvel at the native beech and countless waterfalls as you continue toward the West Coast.

Crossing the Haast River you are now truly in the Wild West, a 600-kilometre stretch of bush, rainforest and podocarp forest. Continue to arrive at Fox Glacier, your destination for the night. Home to the largest glacier on the west coast, Fox is 13 kilometres long and ends in rainforest only 250 metres above sea level.

SUGGESTED ACTIVITY - Twin Glacier Scenic Helicopter Flight with The Helicopter Line

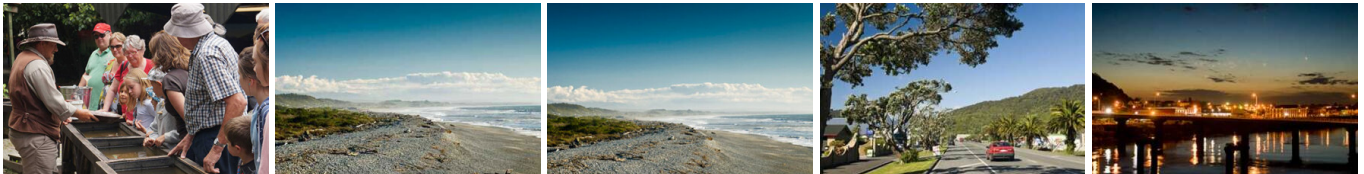
Experience the breathtaking beauty of not one, but two spectacular glaciers—Fox Glacier and Franz Josef Glacier. Get up close to their stunning neve and intricate ice formations, with a snowfield landing that's sure to be a highlight of your journey. Capture incredible photos, make a snowball, and create unforgettable memories during this 35-minute scenic flight with a snow landing. If weather conditions prevent your flight, your booking can be easily transferred to a similar tour with The Helicopter Line in Queenstown or Mt Cook. It is important to read and understand the risks associated with this activity. A full risk disclosure can be found here.

Your accommodation: Heartland Hotel Glacier Country

Heartland Hotel Glacier Country is located right in the centre of Fox Glacier township, putting you in easy reach of the unique experiences available within Westland National Park.



Day 7



Fox Glacier to Greymouth Train Station (Return Rental Car)

The drive north from Fox and Franz Josef takes you through the historic gold mining region of Ross and the town of Hokitika, a great place to explore the craft stores, in particular the jade or greenstone. The largest town on the West Coast, Greymouth is also the starting point for the TranzAlpine Scenic Train. Drop your rental car at the Greymouth Train Station depot located inside the train station building and board the TranzAlpine train.

TranzAlpine Scenic Train: Greymouth to Christchurch

Considered one of the world's great train journeys, the TranzAlpine Scenic Train takes you from Greymouth to Christchurch. Travel across the South Island from the west to the east coast through Arthur's Pass National Park. From the comfort of your carriage see lush beech forest, deep river valleys and the spectacular peaks of the Southern Alps. Descend to the windswept Canterbury Plains before arriving in the city of Christchurch.

Shared Transfer from Christchurch Train Station to Christchurch CBD Accommodation with Christchurch Touring Company

On arrival at the Christchurch railway station, you will be met by a driver and transferred to your Christchurch accommodation.

SUGGESTED ACTIVITY - TranzAlpine Scenic Plus Addon - KiwiRail

Feel like luxurious service, exclusive meals, inclusive drinks and priority check-in and boarding? The Scenic Plus add-on option is for you. Enjoy personal service with panoramic windows, spacious carriages and comfortable seating. The exclusive open-air viewing carriage is available if you feel like capturing the ultimate photo or simply wish to experience the great outdoors whilst travelling through the Southern Alps. Your food is prepared exclusively in a kitchen carriage, with paired drinks and a paddock-to-plate regionally inspired food menu all your senses will be fully engaged on this journey.

Your accommodation: Scenic Hotel Cotswold

The Scenic Hotel Cotswold is just a few minutes walk to boutique shopping at Merivale and Hagley Park. The distinctive architecture of the Scenic Hotel Cotswold reflects Christchurch's image as the most English of cities outside of England.



Day 8









Private Transfer from Accommodation to Airport with Christchurch Touring Company

Enjoy a seamless, private transfer from your Christchurch city accommodation directly to the Christchurch Airport in time for your departing flight.

Farewell from Aotearoa / New Zealand

Bid farewell to Aotearoa / New Zealand, taking with you unforgettable memories of its breathtaking landscapes and incredible adventures. In Māori, it is said mā te wā, which is not goodbye, it is see you soon!

Tour details

Departures:	Daily
Tour type:	South Island Self Drive
Starts:	Christchurch
Finishes:	Christchurch
Tour length:	8
Accommodation:	Hotel 3 star
Car/transport type:	

Accommodation summary

Day 1	Scenic Hotel Cotswold
Day 2	Distinction MacKenzie Country Hotel, Twizel
Day 3	Kingsgate Hotel Dunedin
Day 4	Kingsgate Hotel Te Anau
Day 5	Ramada Hotel & Suites Queenstown Central
Day 6	Heartland Hotel Glacier Country
Day 7	Scenic Hotel Cotswold