



Coast to Coast South Island Family Adventure

This 13 day tour is full of activities the whole family will enjoy, including adventure in Queenstown with a Shotover Jet boat ride and an iceberg encounter in Mt Cook National Park. You'll also get up close to our wonderful wildlife including penguins and magical glow worms. With many activities included and fantastic family friendly accommodation this is the South Island family holiday you'll remember for all the right reasons.

Starts in: Christchurch
Finishes in: Christchurch
Length: 13days / 12nights
Accommodation: Motels
Can be customised: Yes

This itinerary can be customised to suit you perfectly. We can add more days, remove days, change accommodations, mix it up, add activities to suit your interests or simply design and create something from scratch. Call us today to get your custom New Zealand itinerary underway.



Inclusions:

Includes: Late model rental cars

Includes: Unlimited kms

Included activity: Private Transfer Christchurch International Airport to Christchurch Accommodation

Included activity: TranzAlpine Scenic Train: Greymouth to Christchurch

Included activity: Private Transfer from Christchurch Accommodation to Christchurch Airport with Christchurch Touring Company

Included activity: International Antarctic Centre - General Admission

Included activity: Penguin Tour with The Opera

Included activity: Milford Sound Cruise with Real NZ - Lunch Included

Included activity: Gondola and 3 Luge Rides with Skyline Queenstown

Includes: Fully inclusive rental car insurance (excess may apply)

Includes: Afterhours emergency support while touring

Included activity: Electronic Travel Guide and In-Country Support App

Included activity: Shared Transfer from Christchurch Train Station to Christchurch CBD Accommodation with Christchurch Touring Company

Included activity: Christchurch Gondola

Included activity: Glacier Explorers

Included activity: Te Anau Glowworm Caves with RealNZ

Included activity: Shotover Canyon Jet Boat Ride

: 1 lunch

Day 1



Private Transfer Christchurch International Airport to Christchurch Accommodation

On arrival, you will be met by a private driver and transferred to your Christchurch accommodation.

Welcome to Christchurch City

Christchurch New Zealand's garden city is steadily being transformed into a vibrant urban destination. Encompassing a large green belt, it is known for its wide tree lined avenues and lush gardens. A great way to explore the city or easy way to see the sights or ride the historic trams across town to the renowned botanic gardens and the unique cardboard Transitional Cathedral, that's right it is built of cardboard!

Your accommodation: Quest on Cambridge

Quest on Cambridge serviced apartment-style hotel rooms offer guests a relaxed and comfortable Christchurch accommodation experience. Each room has an open-plan living area, a fully equipped kitchen, and natural light. Quest on Cambridge is a short walk from the south shopping centre and to the Botanic Gardens.



Day 2



Collect Rental Car

Choose a car to best suit your needs from our fantastic rental car range. From compact economy, hatchbacks to prestige SUVs.

Explore Christchurch

Following earthquakes that razed its centre and much of the outlying suburbs, Ōtautahi-Christchurch is well into a billion-dollar makeover. In the middle of the Canterbury Plains, bordering the Pacific Ocean, New Zealand's newest city is an ideal gateway to exploring the middle of the South. Go punting on the Avon River, take a historic tram ride, catch the gondola to the rim of an extinct volcano or do all three! See the world's only Cardboard Cathedral and for nature enthusiasts - wander the renowned Christchurch Botanic Gardens, or head to Oxford Terrace in the city to find a great spot to eat or drink. Drive an hour in any direction to ski, mountain bike, wine taste, whale-watch, bungee jump or play golf. Take the winding Port Hills road to the French settlement of Akaroa & Banks Peninsula and tour the vines in Waipara for an authentic New Zealand wine-tasting experience.

Christchurch Gondola

In the Heathcote Valley, just a 20-minute drive from the heart of Christchurch City, ride the Christchurch Gondola for nearly a kilometer to the collapsed rim of an extinct volcano, which exploded six million years ago. Take in the spectacular panoramic views of the central city, Lyttelton Harbour, Banks Peninsula, Canterbury Plains, and the distant peaks of the Southern Alps. Wander the summit complex, enjoy a coffee or lunch in the cafe, and choose one of many nature walks to explore or visit the Christchurch Discovery Ridge, a dramatic reconstruction of the history of the Port Hills and Christchurch.

International Antarctic Centre General Admission

The International Antarctic Centre aims to recreate the atmosphere and environment of Antarctica, providing visitors with an interactive, fun, and educational experience. Feel the full Four Seasons of Antarctica, where you'll experience a custom-built snow and ice experience, then warm up in the Scott Base interior exhibit, a replica Antarctic field camp, or other informative displays in the gallery. You'll also learn about life in modern-day Antarctica, view real little blue penguins, and experience a thrilling ride in a Hagglund all-terrain vehicle.

SUGGESTED ACTIVITY - Willowbank Wildlife Reserve

Nowhere else in New Zealand will you find such a wide range of New Zealand wildlife so close to you. Willowbank provides you with a "Kiwi Guarantee" and is home to New Zealand's largest and most accessible Kiwi viewing area. With this unique experience, you will see New Zealand's natural splendor firsthand, and view Kiwis that are not hidden behind glass. You will explore one of the most complete selections of New Zealand native and introduced wildlife in natural bush surroundings. Much of the Willowbank wildlife wander free and can be petted and fed.

Choose to explore the reserve yourself, or for an up-close Kiwi experience, you can take a guided tour.

Your accommodation: Quest on Cambridge

Quest on Cambridge serviced apartment-style hotel rooms offer guests a relaxed and comfortable Christchurch accommodation experience. Each room has an open-plan living area, a fully equipped kitchen, and natural light. Quest on Cambridge is a short walk from the south shopping centre and to the Botanic Gardens.



Day 3



Christchurch to Aoraki-Mt Cook National Park

Drive through the heart of the South Island, crossing the vast Canterbury plains. Catch your breath in Geraldine before continuing through Fairlie. Ascending Burkes pass you'll come to the picturesque town of Lake Tekapo. Follow the road and take in the view of Aoraki-Mt Cook (New Zealand's tallest mountain) from the shores of Lake Pukaki, known for its glacier fed turquoise blue colour. Continue along the lake to your final destination Aoraki-Mt Cook Village.

Glacier Explorers

Experience 500-year-old icebergs up close on the Aoraki-Mt Cook terminal lake. The Glacier Explorers tour is the only one of its kind in New Zealand and one of only three in the world! Very few glaciers terminate into lakes and even fewer of them are accessible. See towering ice cliffs and floating icebergs from the safety of a specially designed boat. These boats provide a safe way to view unseen and inaccessible areas of New Zealand's largest glacier The Tasman.

Your accommodation: Mt Cook Motel

Mt Cook Motel, nestled in the heart of Mt. Cook Village, offers spacious self-contained units that provide comfort and convenience. Each unit is surrounded by breathtaking alpine mountain views, making it the perfect retreat for nature lovers and adventurers alike.



Day 4



Aoraki Mt Cook National Park to Dunedin

Leave Aoraki Mt Cook National Park and travel past Twizel, one of the locations for the Lord of the Rings films. Go through Omarama, the gliding capital of New Zealand. Continue down the Waitaki Valley follow the hydro power generating system towards the east coast. Stretch your legs in Oamaru, known for its white stone buildings constructed with the local Oamaru Stone and Steampunk influence. If you were a little late off the mark this morning you may get the chance to see the blue penguins come ashore at dusk. Continue south down the coast to Moeraki, and take a detour towards the beach to see the Moeraki Boulders, a unique geological feature well worth a look. As you arrive in Dunedin, take in the city's Edwardian and Scottish heritage reflected in the buildings around the city centre The Octagon.

Your accommodation: Motel on York

Motel on York is located in the heart of Dunedin city. The property offers superior accommodation only 300 metres away from cafes and restaurants.



Day 5



Explore Dunedin and the Otago Peninsula

Known as the Edinburgh of the South, Dunedin City has a heavy Scottish influence. Surrounded by rugged coastal plains and windswept beaches it's home to an eclectic mix of historical and modern architecture as well as industrial technology. Renowned for its Flemish Baroque-inspired 'gingerbread house' Railway Station, this university town is bustling with life. Head to the Saturday farmers market held in the aforementioned railway grounds for a taste of organic produce, handmade crepes and local honey. Explore the many cafes and wine bars in The Octagon, then continue on a self-guided walking tour of the internationally acclaimed Street Art dotted around the city. Drive to the coast and watch the freighters passing in the distance while you sunbathe, or hire a mountain bike and test your legs on one of the many trails available in the area. For a more immersive historical experience, follow the coast to New Zealand's only castle, Larnach Castle. On your way back be sure to head to the Otago Peninsula to see the largest mainland Albatross colony in the world.

Penguin Tour with The Opera

Learn about the endangered Yellow Eyed Penguin when you visit The Opera - Otago Peninsula Eco Restoration Alliance, a private conservation reserve dedicated to ensuring the survival of this unique species. The project is entirely funded by guided tours which allow the conservation team to engage in habitat restoration, predator control, a research program, and an on-site rehabilitation facility.

On your tour, you will learn about the issues the Yellow Eyed Penguin faces, their life cycle, and how the project is carried out. Your experience will begin in a theatre before moving to the rehabilitation center where penguins may be seen up close. You'll take a short bus trip over to the reserve and be led on foot approx 2km by your guide through a system of covered trenches to view hides that allow access to the living and breeding habitat of this very shy bird without disturbing them. There is also an opportunity to meet other animals that reside in the reserve including fur seals, sea lions, and several species of shore and land birds.

SUGGESTED ACTIVITY - Albatross Classic Tour with Royal Albatross Centre

This tour focuses on the Royal Albatrosses and wildlife that inhabit Pukekura (Taiaroa Head). Begin with a short film, then enjoy the informative commentary provided by your guide about albatrosses as you visit the observatory to see nesting albatrosses in their natural habitat.

Your accommodation: Motel on York

Motel on York is located in the heart of Dunedin city. The property offers superior accommodation only 300 metres away from cafes and restaurants.



Day 6



Dunedin to Te Anau (via Invercargill)

The drive to Te Anau takes you through classic Southland farming scenery. Head off-the-beaten-track today and follow the coastline instead of the inland route. Go through The Catlins area and be sure to take a detour to Kaka Point to view its majestic cliffs and pounding surf. If time permits, keep driving towards Nugget Point, iconic for its steep headland with a lighthouse perched atop. Continue through Invercargill to Riverton and Colac Bay, and then head north to Manapouri. From here you can embark on a day or overnight cruise to the remote Doubtful Sound, renowned for its natural beauty. Just a short way further will bring you to your lakeside destination of Te Anau, gateway to Fiordland National Park and Milford Sound.

Te Anau Glowworm Caves with RealNZ

Begin your Te Anau Glowworm experience with a scenic cruise across Lake Te Anau on board the luxury catamaran, Luminosa, to the western side of the lake. On arrival, you'll enter the caves through Cavern House, where informative displays detail the history of this 12,000 year old underground network. You'll then explore by limestone pathway while your guide points out hidden whirlpools, sculpted rock formations, and a rushing underground waterfall. See a magical display of thousands of glowworms as you glide through the darkness in a small boat.

Your accommodation: Radfords on the Lake

Architect designed and recently refurbished located right on the edge of Lake Te Anau to give magnificent views of the lake and mountains from all units. The complex is only 3 minutes walk to the town centre including shops, restaurants and cafes.



Day 7



Te Anau to Milford Sound, returning to Te Anau

The magnificent Milford Road leading to Milford Sound offers some of the most beautiful and iconic scenery in the country. Countless photo opportunities mean this drive should not be rushed. From crystal clear lakes and towering mountains to lush glacier-formed meadows, this area is abundant with picture-perfect scenes. Continue on through the Homer Tunnel, an engineering marvel at 1219 meters long. Arriving in the village of Milford, you will be greeted with an amazing view of Mitre Peak. A day cruise into the heart of the sound is not to be missed. You'll learn about how this magnificent area was formed and experience the wonder of the falls that line the Fjord before back-tracking the way you came.

Milford Sound Cruise with Real NZ - Lunch Included

Get up close and personal with Milford Sound on a leisurely cruise of this spectacular fiord. From thundering waterfalls to sky-high mountains to lush rainforests, Milford has it all. Experience the spray of a waterfall as you cruise close to sheer rock faces. Informative, participative and relaxed, this is the perfect way to experience Milford Sound to the fullest.

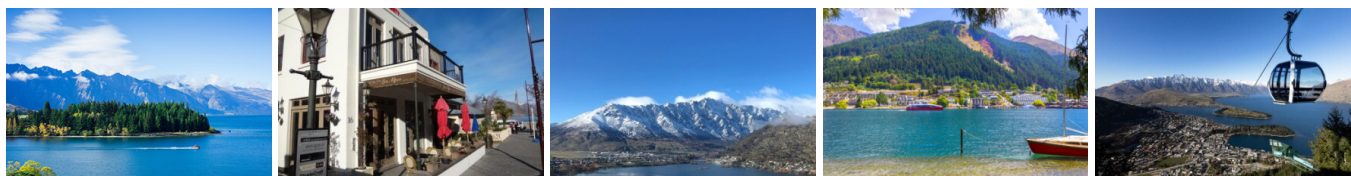
Your accommodation: Radfords on the Lake

Architect designed and recently refurbished located right on the edge of Lake Te Anau to give magnificent views of the lake and mountains from all units. The complex is only 3 minutes walk to the town centre including shops, restaurants and cafes.

Meals included: Lunch



Day 8



Te Anau to Queenstown

Journey across expansive tussock lands en route to Queenstown. Pass through Mossburn, renowned as the deer capital of New Zealand, and continue through the picturesque Southland countryside. As the road begins to trace the edge of Lake Wakatipu, marvel at the breathtaking views from the Devil's Staircase. Finally, approach Queenstown, the adventure capital of New Zealand, with the Remarkables mountain range standing majestically in the backdrop.

Your accommodation: Blue Peaks Apartments

Blue Peaks Apartments offers apartment-style accommodation in the heart of Queenstown. The premium holiday apartments are self-contained, spacious and fully equipped with everything you will need for your stay. Conveniently located, just a 2-minute walk to the town centre, yet facing on to a quiet tree-lined street opposite the Queenstown Gardens.



Day 9



Explore Queenstown

Well-known as New Zealand's 'adventure capital', Queenstown is home to a range of adventures, from the world's first and most famous bungy jumps to jet boat thrills, white-water rafting, and skydiving. However, Queenstown offers far more than a fast-paced, action-packed holiday. Settled on the shores of beautiful Lake Wakatipu beneath a soaring panorama of the Remarkables Mountain Range, this alpine town is surrounded by many historic, gastronomic, and scenic wonders. Take a stroll through the beautiful lakefront parks and gardens, browse through market stalls on weekends, dine in wonderful al-fresco restaurants, or ride on the 100-year-old historic Steamship - TSS Earnslaw to Walter Peak Station. Take the Queenstown Gondola up to Bob's Peak and soak up the panoramic views of the magnificent lake and mountain ranges. And after all of that, if you do want the adrenaline rush, Queenstown is known for taking your pick from the Shotover Jet, Canyon Swing, Zipline, Luge, or Heli-hike.

Shotover Jet Canyon Jet Boat Ride

Shotover Jet is the only company permitted to operate in the Shotover River Canyons. It's a thrilling ride! Skim past rocky outcrops at close range in your Shotover Jet 'Big Red', as you twist and turn through the narrow canyons at breathtaking speeds. And a major highlight - hold tight for the world-famous Shotover Jet full 360-degree spins!

Gondola and 3 Luge Rides with Skyline Queenstown

In the heart of Queenstown, located 450 metres above town in the Ben Lomond Scenic Reserve is the Skyline Complex. A gondola ride to the summit makes for awe-inspiring views of the city surround. Arrive at the complex and wander the outside viewing decks for a picture perfect outlook. Then onto the Luge! The 800 metre luge track offers an exhilarating journey through banked corners, tunnels and dippers.

SUGGESTED ACTIVITY - TSS Earnslaw Cruise and Walter Peak Gourmet BBQ Dinner

Enjoy a quintessential Kiwi experience, a delicious gourmet BBQ buffet meal, and a farm demonstration in a stunning lakeside setting. Take in the stunning views of Lake Wakatipu and its surroundings as you cruise across the lake to the historic Walter Peak high country farm aboard the TSS Earnslaw Steamship. Enjoy the ambiance of the heart of the stately homestead while your Colonel's Homestead Restaurant chef prepares a gourmet BBQ dinner. Your seasonal menu includes an extensive selection of local New Zealand produce, including succulent meats and a selection of delicious vegetables and salads. Complete your meal with your choice of delicious desserts, or New Zealand cheeses. After dinner, watch the farm dogs in action with a sheep-herding demonstration and say hello to the other farm animals. Finally, cruise home under the southern stars and enjoy the fresh night air as the lights of Queenstown draw ever closer.

Your accommodation: Blue Peaks Apartments

Blue Peaks Apartments offers apartment-style accommodation in the heart of Queenstown. The premium holiday apartments are self-contained, spacious and fully equipped with everything you will need for your stay. Conveniently located, just a 2-minute walk to the town centre, yet facing on to a quiet tree-lined street opposite the Queenstown Gardens.



Day 10



Queenstown to Franz Josef Glacier via Wānaka

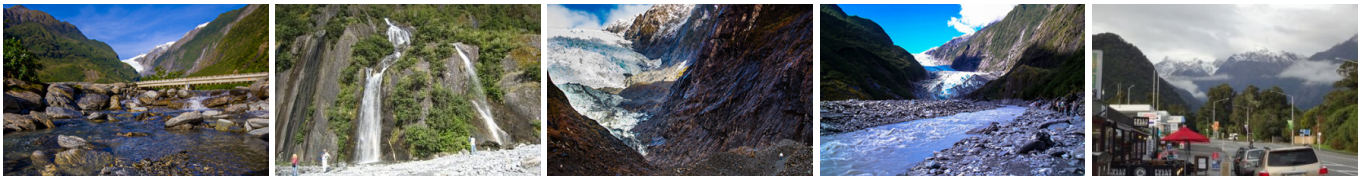
From Queenstown you'll cross the Crown Range, the highest sealed road in New Zealand to arrive in the Alpine town of Wānaka, gateway to Mt Aspiring National Park. Skirting the shores of both Lake Wanaka and Hawea, you will enter the small town of Makarora. Stop at Blue Pools for a 1-hour return walk through the native beech forest to a glacier-fed swimming hole. Continue on through the remote seaside settlement of Haast before heading up the wild West Coast highway you pass through ancient temperate rainforests while getting sneak peeks of the wild coast beaches occasionally. Paringa Salmon Farm is worth a stop to stretch your legs, feed the fish, and stop for lunch and refreshments. Keep heading North and be sure to enjoy the view of the ever-changing towering snowcapped Southern Alps Mountain Range. Fox Glacier welcomes you first, then comes your destination for the night Franz Josef township.

Your accommodation: Punga Grove Motel & Suites

Punga Grove is right in the heart of Franz Josef Glacier village stylish accommodation in a beautiful rainforest setting.



Day 11



Explore Franz Josef

Franz Josef is a small yet lively town in the heart of New Zealand's West Coast, best known for its spectacular 12 km-long glacier. The township is surrounded by lush, rainforest-clad mountains and has a vibrant atmosphere with plenty to explore. A variety of scenic walking trails offer incredible views of the glacier, but for a truly up-close experience, a licensed helicopter tour is the only way to set foot on the ice. Beyond the glacier, unwind in the rejuvenating Hot Pools or visit the West Coast Wildlife Centre to spot rare kiwi birds. If you're in the mood for a more relaxed day, the township is home to charming souvenir and gift shops, as well as great dining spots like SnakeBite Brewery and King Tiger. Whether you're chasing adventure or relaxation, Franz Josef is a stunning blend of wild beauty and welcoming hospitality.

SUGGESTED ACTIVITY - Franz Josef Nature Tour with Glacier Valley Eco Tours

Nestled in thick historic West Coast forest and a stone's throw from wild black sand beaches, this is one of the world's most unusual glaciers. Beautiful blue skies or magical misty rain, whatever the weather - you will feel like you are in Narnia or LOTR.

With easy walking at your pace, information on glaciology, geology, geomorphology, flora and fauna, local legends, history, and small guided groups with fantastic guides, you will experience this glacier in style and in the best hands with the only local company. Wander past glacier rivers and streams and through beautiful podocarp forest; discover hidden natural treasures such as native snails, wild native mushrooms, and dozens of species of native orchids; listen to native bird song and waterfalls; see if you can spot a Chamois or a Tahr on the huge snow-capped mountains above while drinking a cup of tea and talking one-on-one with your guide.

SUGGESTED ACTIVITY - Twin Glacier Scenic Helicopter Flight with The Helicopter Line

A spectacular scenic flight soaring over two of New Zealand's most famous glaciers, Fox and Franz Josef. Landing at the head of one and view the incredible sight of this frozen river as it winds its way through ancient carved valleys.

Your accommodation: Punga Grove Motel & Suites

Punga Grove is right in the heart of Franz Josef Glacier village stylish accommodation in a beautiful rainforest setting.



Day 12



Franz Josef to Greymouth Train Station

Head north along the mighty West Coast highway you pass through ancient temperate rainforests while getting sneak peeks of the wild coast beach occasionally. Whataroa is the next town where you can see one of the world's rarest birds, the Kōtuku - White Heron. The Kōtuku nest at the Waitangi Roto Nature Reserve, only accessible with a guided tour from October to March. The next town is Ross which is the site of an old gold mining settlement where the local information centre offers you the chance to pan for gold. Hokitika is a great place to explore craft and gift stores and head to the coast and take in the endless sea views. The Pounamu-Greenstone on offer in Hokitika is probably some of the best you will see in the country. Continue on to Greymouth, the largest town on the West Coast and the starting point for the next leg of your journey the TranzAlpine Scenic Train. Drop your rental car at the Greymouth Train Station depot located at the train station building before boarding your train to Christchurch.

TranzAlpine Scenic Train: Greymouth to Christchurch

Considered one of the world's great train journeys, the TranzAlpine Scenic Train takes you from Greymouth to Christchurch. Travel across the South Island from the west to the east coast through Arthur's Pass National Park. From the comfort of your carriage see lush beech forest, deep river valleys and the spectacular peaks of the Southern Alps. Descend to the windswept Canterbury Plains before arriving in the city of Christchurch.

Shared Transfer from Christchurch Train Station to Christchurch CBD Accommodation with Christchurch Touring Company

On arrival at the Christchurch railway station, you will be met by a driver and transferred to your Christchurch accommodation.

Your accommodation: Quest on Cambridge

Quest on Cambridge serviced apartment-style hotel rooms offer guests a relaxed and comfortable Christchurch accommodation experience. Each room has an open-plan living area, a fully equipped kitchen, and natural light. Quest on Cambridge is a short walk from the south shopping centre and to the Botanic Gardens.



Day 13



Private Transfer from Christchurch Accommodation to Christchurch Airport with Christchurch Touring Company

A private transfer will collect you from your accommodation and transfer you to Christchurch Airport in time for your departing flight.

Farewell from Aotearoa-New Zealand

Bid farewell to New Zealand, taking with you unforgettable memories of its breathtaking landscapes and incredible adventures. In Maori, it is said mā te wā, which is not goodbye, it is see you soon!

Tour details

Departures:	Daily
Tour type:	South Island Self Drive
Starts:	Christchurch
Finishes:	Christchurch
Tour length:	13
Accommodation:	Motels
Car/transport type:	

Included activities

Includes	Private airport transfers
Includes	Private train station transfers
Includes	TranzAlpine Train from Greymouth to Christchurch
Includes	International Antarctic Centre
Includes	Christchurch Gondola Ride
Includes	Glacier Explorers Tour, Mt Cook National Park
Includes	Penguin Place
Includes	Shotover jet boat ride
Includes	Real Journeys Milford Sound Cruise
Includes	Te Anau Glow Worm Caves

Accommodation summary

Day 1	Quest on Cambridge
Day 2	Quest on Cambridge
Day 3	Mt Cook Motel
Day 4	Motel on York
Day 5	Motel on York
Day 6	Radfords on the Lake
Day 7	Radfords on the Lake
Day 8	Blue Peaks Apartments
Day 9	Blue Peaks Apartments
Day 10	Punga Grove Motel & Suites
Day 11	Punga Grove Motel & Suites
Day 12	Quest on Cambridge